**THE WILDCATTER**
MICHAEL LATE BENEDUM CHAPTER

AMERICAN ASSOCIATION OF PROFESSIONAL LANDMEN



Rob Greiner, Tina Thomas, Ethan Beitel and Daniel Cooper pose for a photo at NAPE 2026.

INSIDE THE ISSUE:

APPALACHIAN LAND INSTITUTE AND MLBC 5K & FAMILY FUN RUN



INSIDE THE **APRIL ISSUE**

- 3** LETTER FROM THE PRESIDENT
- 5** CORPORATE SPONSORS
- 6** 2026 SPONSORSHIP LEVELS
- 8** APPALACHIAN LAND INSTITUTE
- 9** FEBRUARY EDUCATIONAL LUNCHEON
- 10** ANNUAL MLBC SPRING CHARITY GOLF OUTING
- 13** OUT OF OFFICE
- 14** AAPL DIRECTOR'S REPORT
- 18** AAPL UPDATES
- 28** LEG & REG UPDATE
- 26** THE BASIN BRIEF
- 33** WVU ELM PROGRAM UPDATE
- 34** MARIETTA COLLEGE SYMPOSIUM
- 35** MLBC 5K & FAMILY FUN RUN
- 36** MLBC AWARD NOMINATIONS
- 38** UPCOMING MLBC EVENTS
- 39** EXECUTIVE COMMITTEE
- 40** COMMITTEE CHAIRS
- 41** MEMBERSHIP REPORT
- 42** MEMBERSHIP INFO

LETTER FROM THE PRESIDENT

MLBC PRESIDENT, KEVIN PIERSON



Greetings MLBC Members! It's hard to believe my term as your president is already entering its final stretch. The year has raced by to say the least. As I reflect over the last nine months, I'm proud of the Association's steadfast progress and accomplishments. These are only made possible through the collective efforts of many. Although, it would be remiss of me to idle with much more on the horizon.

Charge Ahead.

Whether you're serving the MLBC in an official capacity, or a member who commits their time to attend an event, both are meaningful contributions that advance the Association and the Landman profession. It doesn't stop there, though. The support of our corporate sponsors is critically important to both the quality and frequency of the events. Additionally, there's other important contributions not as easily measured by directly or indirectly promoting the MLBC at your place of work or through your professional networks. I recognize at least some of these grassroots efforts made to promote MLBC events and the benefits of membership. This advocacy is often natural, without recognition, and is often only known to only a limited number sought to attend an event or to consider becoming a member.

Down the Stretch.

I've thoroughly enjoyed the opportunity to connect with so many members and land professionals on an individual basis both at MLBC events and otherwise. The range of roles and distinctive applications of land work performed continues to evolve the landscape in the Appalachian Basin.

The delight extends to the aspiring land professionals studying energy management at Marietta College or West Virginia University. Many of whom I have the pleasure of knowing on a first name basis through their continued participation at MLBC events or outreach to their respective student associations. With Scholarship Applications opening soon, the members of the Scholarship Committee will get to learn a lot more about their collegiate accolades prior to awarding scholarships to multiple elite applicants.

As they prepare to embark on a career, their drive and determination encourage those of us with many miles under our belts to reflect, rejoice, and seek ways to mentor the next generation of Landmen. Floored by the excitement, I regularly interject introductions at our social-networking events to create an introduction with a member who's fulfilling career has already journeyed down the student's aspirational road. The career paths shared by members are often unorthodox by their own admission and far from the linear anticipation. Among the unexpected twists and turns, highs and lows, were opportunities in disguise, only realized much later. The steps taken along the way define character and never displayed with the job title on a business card. The fellowship and bantering of Landman tales usually lead to a later night but I wouldn't want it any other way.

Under the Hood.

The events held throughout the year do require extensive planning, preparation, and efforts on behalf of the Association. It's imperative these events provide our members with these opportunities. Throughout my term as president, I've relied heavily on many members and their service to the Association. Those already serving as officers, event chairman, or committee members, contributed significantly to promote the land profession through educational opportunities, member social events, and emphasis to do more for the charities in the Appalachian community.

When you look under the hood of the MLBC, the committees are the powerful, supercharged engine that drives the Association. Thus far, we've more than doubled the number of members actively serving on committees. The committee member growth may seem significant but it's only a fraction of what's necessary to fuel the highest standards of performance. The MLBC has nearly 20 total committees which includes multiple standing committees, seasonal committees, charity events, education, membership, sponsorship, legislation, marketing, and many more.

Continued

Hooked and Booked.

The MLBC currently has multiple committees served by the Chairman as the sole committee member. We could use additional hands to collaborate ideas, share the workload, and expand personal networks through service, for the betterment of the Association. If doing more for the MLBC is of interest to you, please contact me. I'd love to know what interests you.

Around the Basin.

Major M&A activity in Appalachian Basin with multiple large-scale acquisitions. Antero Resources announced their acquisition of HG Energy for \$2.8 billion plus the purchase of their midstream assets by Antero Midstream for \$1.1 billion. The recent acquisition by Antero comes off the heels of their recent divestiture of their Ohio Utica position to a partnership of Infinity Natural Resources and Northern Oil & Gas for a total of \$1.2 billion, with the upstream assets for \$800 million.

Coterra Energy and Devon Energy announced an all-stock merger on February 2, 2026, valued at \$58 billion. The merger combines their extensive Permian Basin (Delaware Basin), Appalachian Basin, and others, expected to generate extensive cost savings.

Downstream, UGI Energy Services (UGIES), a subsidiary of the UGI Corporation, celebrated the commissioning of Carlisle LNG, its new liquefied natural gas (LNG) storage and vaporization facility, located in Carlisle, Cumberland Co., Pennsylvania.

Closing.

As I close this letter, we're approaching the fast straightaway from Spring to Fall, jam-packed with a variety of events. I look forward to catching up with you at one these events soon!

Halo

Land Management

POWERING
AMERICA'S
ENERGY
INDUSTRIES



VISIT OUR WEBSITE
TO LEARN MORE!

TOP
WORK
PLACES
2024

Our fully integrated, technology-driven land services deliver greater efficiency, deeper insight, and unmatched results.

• OIL AND GAS • UTILITIES • CCUS • INFRASTRUCTURE • GIS

2026 CORPORATE SPONSORS



For more information or to purchase a Corporate Sponsor package or advertise in the *The Wildcatter*, please contact Abby Veigel at abbyveigel@mlbc-aapl.org.

DIAMOND



EMERALD



PLATINUM



GOLD



SILVER



2026 CORPORATE SPONSORSHIP LEVELS



The 2026 Corporate Sponsorship tiers are designed to support both the MLBC organization and the MLBC Foundation. Fifty percent of your contribution will support the MLBC organization, with the remaining fifty percent supporting the MLBC Foundation. By contributing, you're helping to advance energy professionals in our region, strengthen the communities where we work, and support the charities we proudly stand behind. Join us and our mission to support land professionals in our region and make a meaningful, lasting impact in our community.

For more information or to purchase a Corporate Sponsor package or advertise in the The Wildcatter, please contact Abby Veigel at abbyveigel@mlbc-aapl.org.

DIAMOND - \$10,000

- \$4,000 Foundation Credit (may be redeemed for event tickets or sponsorship)
- 4 passes to each MLBC educational & social event
- Logo included in every Wildcatter edition & membership email
- Logo linked on MLBC website
- Logo displayed at all events (virtually or in person)
- 4 full page ads in The Wildcatter per year
- 2 half page ads in The Wildcatter per year

EMERALD - \$7,500

- \$3,000 Foundation Credit (may be redeemed for event tickets or sponsorship)
- 4 passes to each MLBC educational & social event
- Logo included in every Wildcatter edition & membership email
- Logo linked on MLBC website
- Logo displayed at all events (virtually or in person)
- 3 full page ads in The Wildcatter per year
- 2 half page ads in The Wildcatter per year

PLATINUM - \$5,000

- \$2,000 Foundation Credit (may be redeemed for event tickets or sponsorship)
- 4 passes to each MLBC educational & social event
- Logo included in every Wildcatter edition & membership email
- Logo linked on MLBC website
- Logo displayed at all events (virtually or in person)
- 2 full page ads in The Wildcatter per year
- 1 half page ad in The Wildcatter per year

GOLD - \$2,500

- \$1,000 Foundation Credit (may be redeemed for event tickets or sponsorship)
- 2 passes to each MLBC educational & social event
- Logo included in every Wildcatter edition & membership email
- Logo linked on MLBC website
- Logo displayed at all events (virtually or in person)
- 1 half page ad in The Wildcatter per year

SILVER - \$1,500

- \$500 Foundation Credit (may be redeemed for event tickets or sponsorship)
- Logo included in every Wildcatter edition & membership email
- Logo linked on MLBC website
- Logo displayed at all events (virtually or in person)

Trusted Legal Counsel to Energy Companies

Step toe & Johnson PLLC is a law firm with
over 500 lawyers and other professionals across 18 offices
serving all sectors of the energy industry

Oil & Gas | Utilities | Mining | Renewables



For more information visit step toe-johnson.com

COLORADO | KENTUCKY | OHIO | OKLAHOMA | PENNSYLVANIA | TEXAS | WEST VIRGINIA

400 White Oaks Boulevard, Bridgeport, WV 26330

THIS IS AN ADVERTISEMENT



APPALACHIAN LAND INSTITUTE

APRIL 2-3 | CANONSBURG, PA



MISSED OUT ON PRIORITY RATES?
MLBC MEMBERS CAN SAVE \$50 WITH THE EXCLUSIVE CODE

MLBC2026

VALID ON NEW REGISTRATIONS WITH STANDARD RATES AFTER 3-16.



KEVIN PIERSON



KYLE REYNOLDS



CASEY KENNEDY



BRIDGET FURBEE



JEREMY WHITE



NIK TYSIK



ALEXANDER MCELROY



ASHLEY NEPTUNE



GRETCHEN ADDINGTON



ANDREW GRAHAM



ROBERT STONESTREET

REGISTER NOW

February Educational Luncheon Recap

February 12, 2026 | The "O"

Over 50 gathered at the "O" in Bridgeport last week for our first educational luncheon of the year. Shawn Grushecky presented on "The Evolution of Data Management."



A huge thank you to our meeting sponsors Claire Sergent Walls Legal Group and Jessica Swisher Law.



Jessica Swisher
ATTORNEY AT LAW (PLLC)

ANNUAL MLBC SPRING CHARITY GOLF OUTING

FRIDAY, MAY 29, 2026
REGISTRATION OPENS @ 7:00AM
SHOTGUN START @ 8:00AM
QUICKSILVER GOLF CLUB
2000 QUICKSILVER RD, MIDWAY, PA



**MAGEE-
WOMENS**

RESEARCH INSTITUTE
& FOUNDATION

Join us for this great event and help us as we embark on our next adventure with UPMC Magee-Women's Research Institute and Foundation! We will have some great prizes to give away and are looking forward to seeing everyone!

Registration will open soon, which will include a round of golf on Quicksilver Golf Course (formerly a host of the Senior PGA Tour and Korn Ferry Tour), boxed breakfast, and also lunch after golf with plenty of prizes.

Please consider sponsoring this great event at one of the sponsorship levels below, and remember that our donations continue to enrich the lives of our communities and their families through the work of the MLBC Foundation and our charities. Let's continue to support our great causes!

*Registration will open in April. \$175/golfer.

SPONSORSHIP GOLF OPPORTUNITIES

MIRACLE SPONSORS – \$2,500

Four (4) golf/food registrations, PRESENTING SPONSOR signage during registration, meal, and awards, additional signage on tee boxes MLBC Newsletter recognition, and event and website recognition

GOLD SPONSORS - \$1,850

Four (4) golf/dinner registrations, TENT on the course, signage during registration, tee box, meal, and awards, and event and website recognition

SILVER SPONSORS - \$1,500

Four (4) golf/dinner registrations, signage during registration, tee box, meal, and awards, and event and website recognition

BRONZE SPONSORS - \$1,350

Company name and logo on one (1) tee box sign and the ability to put up a tent with drinks, music, and/or games for the players, and website recognition

HOLE-IN-ONE SPONSOR - \$750

Company name and logo at the MILLION DOLLAR SHOOTOUT, as well as the hole-in-one raffle ticket table at registration, and website recognition

PRIZE TABLE SPONSOR - \$750

Company name and logo at the Prize Table, as well as the registration table, and website recognition

PRACTICE AREA SPONSOR - \$500

Company name and logo at the driving range and putting green, which is open to all players, and website recognition

TEE SPONSORS - \$500

Company name and logo on a tee box sign and website recognition

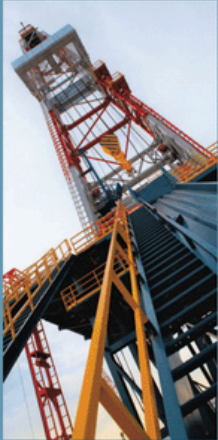
PERSONALIZED SPONSORSHIPS - \$ VARIES

If you are looking for a more personalized way to reach individual golfers, contact us and we can show you available options, or we would be happy to pass out your company swag (ex. Tumblers, golf towels, golf balls).

Please contact Spring Golf Chair Jim Kane to reserve your spot today! If any sponsor would like to provide additional material, please don't hesitate to contact Jim Kane at jkane@cassidyperc.com.

Industry Intelligence. Focused Legal Perspective.
Unparalleled Value.

HIGH-YIELDING RESULTS.



Energy &
Natural Resources



Environmental &
Regulatory



Business
Transactions



Real Estate,
Land Use & Zoning



Pipeline &
HazMat Safety



Commercial
Litigation

We are critical thinkers who are focused, driven and cost effective in everything we do.

Meet our attorneys at babstcalland.com.

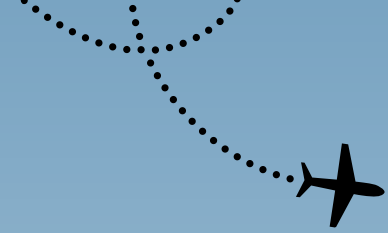
Babst | Calland
Attorneys at Law

Where Trust and Value Meet,[™]





Out of Office



MLBC members Rob Greiner and Danny Cooper traveled to the Dominican Republic this past January for a mission trip focused on serving children and sharing God's love.

During their time there, they visited communities across the country, distributing more than 700 MAGI boxes to students in need. Churches throughout the United States assemble these boxes, filling them with essential items like clothing, toiletries, and small gifts to bring both practical support and joy to the receiving children.

MAGI stands for Making a Godly Impact. Rob and Danny have worked alongside a local missionary for many years, making a lasting impact in the Dominican Republic. The MAGI Project is sponsored by Healing Hands International, which coordinates its worldwide efforts.

MLBC encourages members to share how they are making a difference by serving others. If you would like your outreach efforts featured in an upcoming issue of The Wildcatter, please contact Daniel Cooper, Newsletter Committee Chairman.



AAPL DIRECTOR'S REPORT

Submitted by: Rob Greiner



MLBC Represented at AAPL March Board Meeting

The March AAPL Board Meeting was held in **Las Vegas, Nevada**, at the Encore by Wynn and marked one of the highest attended board meetings in recent memory. The energy throughout the event reflected both the strength of the organization and the continued engagement of its members.

A standout moment came courtesy of Past AAPL President **Scott Stone**, who delivered a memorable Elvis inspired performance that had the room laughing and fully engaged. His Landman themed rendition of "It's Now or Never" featured creative lyrics such as:

- "It's a hard endeavor, to ethics we are bound, powering our profession, we're the best around"
- "Landmen are key, that's why you're great"
- "It's now or never, Landmen are great"

Mr. Stone then welcomed AAPL President **Kyle Reynolds** front and center, adorned him with his own Elvis costume, and sang "Can't Help Falling in Love," reworked with lines like:

- "Only the best lead Landmen, and Kyle this year, you're the one to lead us"
- "We can't help wanting to serve 'til we're all done"

Beyond the entertainment, the meeting reinforced the strong leadership within AAPL. The MLBC is especially fortunate to welcome **Kyle Reynolds** to our upcoming Appalachian Land Institute (ALI). Kyle is approachable, thoughtful, and deeply committed to both AAPL and its local chapters. If you are attending ALI, please take a moment to introduce yourself and extend a warm Appalachian welcome.

Additionally, it was great to hear that Immediate Past President **Nancy McCaskell** enjoyed her visit to ALI so much last year that she plans to return. Nancy is equally engaging and passionate about supporting local chapters, and conversations with her are always both insightful and enjoyable.



Continued

AAPL DIRECTOR'S REPORT

Continued



Board Business & Key Updates

The Board approved next year's budget, which includes a modest **\$5 increase in annual membership dues**. This reflects a proactive strategy to implement small, consistent adjustments over time rather than larger, more noticeable increases in the future. As a member of several professional organizations, I can confidently say the value of AAPL membership continues to far exceed its cost.

If you haven't already, I encourage you to explore the new AAPL website. It has been redesigned to be more user friendly and tailored to individual members. To fully benefit, be sure to update your profile and preferences.

AAPL Strategic Study on the Future of the Profession

One of the most important discussions centered around the future of the land profession. AAPL has recognized concerns around **stagnant day rates** and broader industry challenges, including workforce demographics. Based on past survey data:

- 50% of members are field landmen
- 75% are over the age of 70
- 20% are between 30–70
- Only 5% are under 30

In response, AAPL has engaged **Boston Strategies**, a consulting firm, to conduct a comprehensive study aimed at strengthening and sustaining the profession.

- **Phase 1** (currently underway, \$31,000): Focused on a core region, Texas, where the largest concentration of landmen exists
- **Phase 2 & 3** (board approved, \$118,000 total): Expansion into 12 regions nationwide, followed by a national white paper with actionable recommendations

This initiative underscores a critical reality: without proactive steps, the land profession risks long term decline. This study is designed to identify solutions that ensure both relevance and fair compensation for future generations of landmen.

As always, participation matters. When AAPL surveys are distributed, please take a few minutes to respond. These efforts are only as strong as the data behind them.

Looking Ahead: Annual Meeting in Salt Lake City

The next Board Meeting will take place during the **AAPL Annual Meeting in Salt Lake City, June 24–26**.

The next Board Meeting will take place during the AAPL Annual Meeting in Salt Lake City, June 24–26. If you've attended in the past, you already know this is one of the best opportunities of the year to network, learn, and connect with landmen from across the country. The event offers a strong mix of education, networking, and camaraderie.

If you haven't attended before, I strongly encourage you to consider it.

There are also opportunities to support the next generation of land professionals. If you're unable to attend but would like to help **WVU or Marietta** students participate, please consider making a donation through our foundation. Sponsoring a student is a meaningful way to invest in the future of our profession.

If you have any questions about registration, cost saving opportunities, or sponsorships, feel free to reach out.

See you in Utah!



ANNUAL MEETING

SALT LAKE CITY

JUNE 24-26, 2026



SAVE \$72 ON FULL REGISTRATIONS WITH CODE

LOCALAAPL72.

CANNOT BE COMBINED WITH OTHER OFFERS.

CAN BE USED WITH AAPL ASSISTANCE.





ATENCIOHALL
ATTORNEYS AT LAW

 OIL & GAS

Energy Is Our Industry

Atencio Hall is a premier energy law firm serving the professionals and companies that power this region.



We partner with E&P Companies at every stage, protecting deals, clarifying risk, and keeping projects moving.

LEGAL FOCUS AREAS

- Oil & Gas Title & Due Diligence
- Leasing, Surface Use & Right-of-Way
- Curative & Title Resolution
- Regulatory & Administrative Matters
- Mergers & Acquisitions

Atencio Hall is a proud sponsor of the Michael Late Benedum Chapter of the AAPL for its commitment to landman education, industry leadership, and regional impact.

ROOTED IN THE INDUSTRY. INVESTED IN ITS FUTURE.

 412-275-5969  381 Mansfield Ave, Suite 500, Pittsburgh, PA 15220

 atenciohall.com

SPRING INSTITUTES NOW OPEN

AAPL Energy Institutes offer a premium education event with a fun networking component. Held regionally around the country, these popular events are hosted by AAPL and have leadership coordination with corresponding AAPL local associations.

Read more on how these proposed changes provide an opportunity to grow the next generation of land professionals in "[AAPL Student Membership Expansion](#)" and "[Fueling the Future.](#)"



AAPL ENERGY INSTITUTES

2026 Appalachian Land Institute
April 2-3 | Pittsburgh

A regular sell-out event, the Appalachian Land Institute includes industry experts covering hot topics to the Appalachia region, breakfasts, lunch and a fun networking reception with fellow regional landmen. At least 10 CEUs will be available plus CLEs from Pennsylvania, West Virginia and Ohio. Make plans to catch the Pirates home opener after the Institute on Friday. Register before March 13 to save low priority pricing.



AAPL ENERGY INSTITUTES

2026 Mining & Land Resources Institute
April 15-16 | Lake Tahoe

MALRI includes world-class education, breakfasts, lunches, networking reception and traditional sunset Lake Tahoe beach walk! Attendees can earn 12 CEUs as well as CLEs from a variety of states through intriguing presentations covering topics like legislative updates, AI, ethics, the uranium sector, coal and more! Last year's record-breaking MALRI sold out — secure your spot and low priority pricing before March 25.

AAPL JOINS COALITION URGING THE U.S. SENATE TO PASS PERMITTING REFORM

On Feb. 24, AAPL joined the U.S. Chamber of Commerce and a coalition of national and regional trade groups in an open letter to the U.S. Senate urging lawmakers to pass permitting reform legislation. The Chamber was joined by the American Petroleum Institute, American Public Power Association and the Independent Petroleum Association of America, among other signatories.

[READ FULL MEMBER ALERT & LETTER](#)

HAMM INSTITUTE FOR AMERICAN ENERGY + AI INITIATIVE

AAPL is joining a seat at the table with other industry leaders for the AI Strategic Partnership Initiative with the Hamm Institute for American Energy. This national effort addresses the most pressing policy challenge of our time – enabling abundant energy production and the build out of the nation’s power grid to meet growing demand for artificial intelligence. The initiative is focused on independent research and analysis as well as high-level convening and strategic alignment, which includes engaging with energy and technology leaders and policymakers.

AAPL members can log in to catch up on the latest reports from the Hamm Institute.

LEARN MORE & READ REPORTS

THANK YOU FROM NAPE

The 2026 NAPE Summit is in the books and as the managing partner of the world's largest and most successful energy marketplace, AAPL would like to thank the thousands of energy professionals who attended! We'd also like to thank all AAPL members who swung by AAPL's brand-new booth to catch up on AAPL happenings, score a member-exclusive T-shirt, grab other exclusive swag, play games and network with fellow land professionals.



2027 NAPE SUMMIT EXHIBITOR REGISTRATION NOW OPEN

The 2027 NAPE Summit will be held Feb. 3-5 and will offer a dedicated networking space on the expo floor to showcase your prospects, producing properties, services and technologies, attract potential clients, initiate purchases and make deals happen. Snag a booth for a low as \$500 before March 27.

MORE INFO



Salt Lake City hosts [AAPL's 2026 Annual Meeting](#), the land profession's flagship professional development and networking event, June 24-26. The conference aims to elevate the land profession with business-building networking, world-class professional development and can't-miss fun! As a reminder, the first 100 landmen who register will receive an Annual Meeting shirt for FREE. Hurry, there are fewer than 10 free shirts left!

Additionally, because you recently attended an Annual Meeting, we're offering an exclusive loyalty offer just for you! Register by April 15 and a \$100 discount will automatically be applied to already low priority registration rates. Save even more with our [Professional Development Assistance Program](#) and group rates.

Continue reading for early info on official Annual Meeting offerings. We hope to see you unite with hundreds of fellow land professionals this summer in SLC!



[ANNUAL MEETING HOME](#)

[ANNUAL MEETING PREVIEW ARTICLE](#)

[LOGIN & REGISTER NOW](#)

EARLY SPEAKER LINEUP

AAPL's 2026 Annual Meeting is packed with expert energy professionals covering hot topics in the industry, including landman day rates, AI, ethics, gas markets and more! Attendees can earn over 12 CEUs as well as CLEs from a variety of states. Check out the list of presenters we have in store so far below:



Other industry leaders include Shandy Robl, Bobby Simpson, Kyla Lawson, Janice Redmond, Matthew Smith, Andrew Cooper, Jasper Mason and more! Stay tuned for the full lineup.

ANNUAL MEETING SPEAKERS

HORIZON BREAKFAST KEYNOTE



We are thrilled to announce that Kathleen Sgamma will be our keynote speaker at this year's Horizon Breakfast! Sgamma has served the oil and natural gas industry for nearly 20 years at Western Energy Alliance, including as president for the last nine years. Her knowledge of energy, public lands, regulatory and natural resource policy is widely recognized across the region and in D.C. as she has testified before Congress over 30 times.

The Horizon Breakfast includes the presentation of the Blankenship Family Horizon Award, which recognizes a trailblazing female land professional who is a leader and has distinguished herself within the industry, in her career and has supported AAPL and its mission. We are privileged to honor Jeanine Piskurich, CPL, as this year's recipient of the award.

FEATURED NETWORKING EVENT: WELCOME RECEPTION

As the official opening to the conference and one of the most popular networking events for landmen, this reception is a great place to reconnect with old friends, form new business relationships and make final tweaks to your plans in SLC. The Welcome Reception also includes our Young Professionals & First-Time Attendee Reception, which helps Annual Meeting rookies get more acclimated with the conference and AAPL. This year's reception is conveniently located at the Grand America Hotel, Annual Meeting's host.

Other networking offerings like our NEW Basin Bash at the Alta Club, Business Meeting and Awards Luncheon, breakfasts and networking breaks create natural settings for meaningful conversations that often lead to long-lasting professional connections.



BEYOND ANNUAL MEETING



SLC offers something for everyone! The "Crossroads of the West" is rich with museums, gardens, hiking trails, golfing, fishing and world-class dining. Nearby attractions such as Temple Square, Red Butte Garden, Antelope Island State Park, Snowbird and Park City make it easy to turn your conference trip into a memorable experience for all ages. Don't forget to grab a tasty dirty soda from Swig!

[PLAN YOUR VISIT](#)

SPONSOR EARLY FOR THE MOST EXPOSURE

With high exposure sponsorship packages available, including premier packages, registration bags and much more, you will have the perfect opportunity to put your company's name and logo in front of hundreds of landmen, dealmakers and executives. Contact [Jennifer Taylor](#) to customize a package or if you have questions about sponsoring.

2026 ANNUAL MEETING SPONSORSHIP PACKAGES

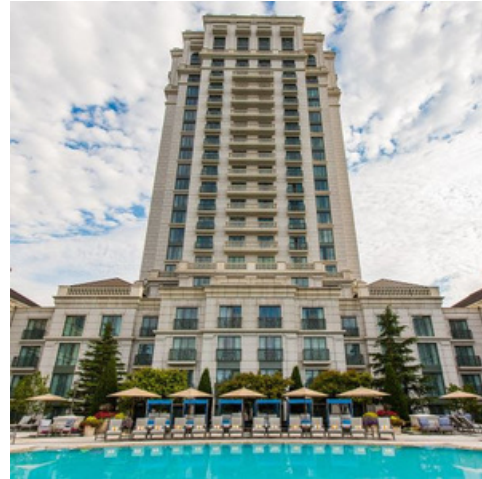
THANKS TO OUR EARLY ANNUAL MEETING SPONSORS



GRAND AMERICA HOTEL

Annual Meeting's host hotel features stunning mountain views, handcrafted European furnishings, heated outdoor/indoor pool and exquisite dining experiences. The exciting downtown location allows for safe walks to more dining options, bars and entertainment.

Because of our heavily discounted rates, a booking link will be shared with registrants in their confirmation email after registering for Annual Meeting.



GET CERTIFIED BEFORE OR AFTER ANNUAL MEETING WITH THE HELP OF AN EXAM REVIEW

AAPL's in-person RPL/CPL Certification Exam Reviews are fast-paced, intensive studies of the topics covered by the CPL and RPL certification exams. Attendees can connect, network and prep with other future AAPL-certified members in an uplifting environment. Current certified members can refresh their skills and earn up to 18 CEUs quickly.

All remaining 2026 reviews – Pittsburgh, Houston, Denver, Midland and Oklahoma City – are open for registration! Take the next step in your energy career with a review.



Can't make it to an in-person review? Try our convenient on-demand options: Day 1, Day 2, Day 3 and full CPL Certification Exam Review Bundle.

CERTIFICATION EXAM PREPPING

MORE ON AAPL CERTIFICATION

LEGISLATIVE & REGULATORY UPDATE

By Nikolas Tysiak, Legislative and Regulatory Chairman



There have been interesting developments surrounding Renewable Energy Zoning, Estate Administration, Real Estate Tax Sales, and all also regarding the West Virginia Unknown Heirs Act.

Renewable Energy Development and Zoning

Renewable energy development faced significant zoning challenges during this period. The Pennsylvania Commonwealth Court's decision in *West Lampeter Solar 1, LLC v. West Lampeter Township Zoning Hearing Board*, 2026 WL 110932, — A.3d — (2026) established important precedent for solar development, holding that a proposed 25-acre agrivoltaics project combining solar energy production with sheep grazing was not agricultural use under zoning ordinances. The court determined that agriculture, as an undefined term given its plain and ordinary meaning, does not include solar energy production, even when combined with traditional agricultural activities like sheep grazing. This ruling significantly impacts solar developers seeking to utilize agricultural zoning classifications for renewable energy projects.

Ohio courts addressed wind energy development in *One Energy Enterprises Inc. Board of Allen Township Trustees of Hancock County One Energy Enterprises Inc v. Board of Allen Township Trustees of Hancock County*, 2026 WL 357969 (2026), involving disputes over wind turbine expansion and local zoning authority. The case arose when Allen Township, historically without zoning laws, began considering zoning regulations in response to proposed wind turbine expansion, demonstrating ongoing tension between renewable energy development and local control over land use.

Estate Administration and Real Property Transfers

Estate-related property disputes also appeared across multiple jurisdictions. Pennsylvania's Superior Court in *Imbrenda v. Imbrenda*, 2026 WL 81887, — A.3d — (2026) addressed a quiet title action involving allegations of forged deeds transferring property from family members to a deceased father. The case largely involved the acceptability of evidence from interested parties regarding the allegedly forged deed. The court examined the application of Pennsylvania's Dead Man's Act, a statute designed to facilitate testimony about pre-death transactions, pursuant to an allegedly forged 1978 deed. The Court ultimately held that a statutory exception to the Dead Man's Act, for parties claiming property interests under the deceased, applied because the controversy involved ownership interests following the father's death rather than estate claims, and found the testimony of such interested parties appropriate.

Ohio courts addressed estate administration complexities in *Estate of Guito Alibrando v. Minor*, 2026-Ohio-133, (5th Cir. 2026), involving disputes over real property sales by a holder of power of attorney and the distinction between probate and non-probate assets in joint survivorship accounts. The court clarified that funds in joint and survivorship accounts are non-probate assets that pass to the surviving joint owner outside of estate administration procedures.

In re Estate of Forte, 2026 WL 249802, — A.3d — (2026), a case where Pennsylvania's Superior Court addressed spousal election rights and property settlement agreements in contested estate proceedings. The Superior Court examined the Orphans' Court's mandatory jurisdiction over estate administration and distribution, noting the court's authority over both decedent estates and testamentary trusts.

Continued

LEGISLATIVE & REGULATORY UPDATE

Tax Title and Property Redemption Issues

Tax title procedures generated significant litigation during this period. Pennsylvania's Supreme Court in *In re Upset Sale, Tax Claim Bureau of Tioga County*, Control No. 012488, 349 A.3d 933 (2026) established that, absent irregularity or illegality in upset tax sale proceedings tied to allegedly inadequate sale prices, the Real Estate Tax Sale Law does not permit landowners to seek equitable relief based solely on sale price, regardless of the ratio between sale price and fair market value.

West Virginia's Intermediate Court of Appeals addressed tax redemption rights in *Roper v. Mattera*, 2026 WL 290363, Not Reported in S.E. Rptr. (February 3, 2026), holding that property owners retain redemption rights until a tax deed is actually issued. The court emphasized that under W.Va. Code § 11A-3-56, "the owner of a tax delinquent property may redeem that property at any time before a tax deed is issued," protecting property owners' rights even when purchasers at tax sales have pending requests for deed issuance.

Winged Foot Minerals, LLC v. SWN Production Company, 2026 WL 685161 (not reported in S.E. Rptr.) (March 3, 2026) was a West Virginia Intermediate Court of Appeals decision addressing the validity of a 1993 tax deed purporting to convey a three-fourths interest in oil and gas rights underlying approximately 227 acres in Marshall County, West Virginia. The case centers on whether severed mineral interests can be properly conveyed through tax deed procedures when the severed minerals may not have been correctly assessed for taxation, and when the severed minerals also appear to have remained assessed with the surface.

The dispute involves a three-fourths oil and gas interest that was originally devised to James Prendergast's predecessors. Petitioners, led by Winged Foot Minerals, LLC and various members of the Prendergast family, claimed ownership of this 75% mineral interest based on James Prendergast's purchase at a 1991 tax sale and the resulting 1993 tax deed. The remaining one-fourth interest in the oil and gas was initially devised to Joseph Nolte, Jr., and remained unsevered from the surface estate. The case reveals a complex title history where the one-fourth interest owned by Joseph Nolte, Jr. was never separately severed from the surface and continued to be taxed as part of the overall surface tract assessment. The remaining $\frac{3}{4}$ interest, while severed in title, appears to have remain assessed with the surface following such severance, and also subject to a later, separate assessment that may have been created improperly. The separate assessment apparently covered interests in "royalty" only and were entered in the name of parties with no interest in such $\frac{3}{4}$ minerals. The central legal issue involves the validity of a tax deed for the severed $\frac{3}{4}$ mineral interest and the requirements for proper tax assessment of such interests. The court focused on the fact that the "royalty" assessment was not proper for various reasons, and also that the $\frac{3}{4}$ oil and gas rights remained assessed with the surface, ultimately finding that the tax deed for the "royalty" rights was void.

WEST VIRGINIA UNKNOWN HEIRS PROCEEDING

Heritage Resources -Marcellus Minerals, LLC v. JB Exploration I, LLC, 2026 WL 688270 (not reported in S.E. Rptr.) (February 18, 2026) was a West Virginia Intermediate Court of Appeals decision addressing the seven-year statute of limitations for reopening unknown heir proceedings under West Virginia's Unknown Heir Statute. The case demonstrates the strict temporal limitations that apply to parties seeking to establish their identity and claim mineral interests after unknown heir proceedings have concluded.

JB Exploration I, LLC had apparently initiated unknown heir proceedings as to a tract of 28.25 acres in McElroy District, Tyler County, to obtain leasing authority over mineral interests owned by unknown or missing owners. Heritage Resources-Marcellus Minerals, LLC subsequently sought to intervene and establish its claim to these mineral interests but filed its motion to reopen after the statutory deadline had expired. The Appeals Court agreed but also stated that the trial court likely erred regarding its declaration that Heritage was, in fact, an unknown owner without appropriate factual findings or development of Heritage's claims. The decision was partially reversed and sent back to the trial court for further development on the factual issues.

Nik Tysiak

Chair – MLBC Legislative and Regulatory Committee

DUDLEY

DELIVERING ENERGY THROUGH LAND

PEOPLE | SERVICE | PRODUCT | EXAMPLE

DUDLEY
LAND COMPANY

DUDLEY
IN-HOUSE STAFFING

DUDLEY
STAFFING

724-745-4717
dudley-land.com
info@dudley-land.com

THE LAND
DEPARTMENT

THE LAND DEPARTMENT

A PODCAST ABOUT
THE STATE OF LAND

OIL, GAS,
RENEWABLES,
UTILITIES

Scan the QR code to
listen to the podcast.



BASIN BRIEF



BASIN ACTIVITY INFORMATION PROVIDED BY AYERS PETROLEUM CONSULTING AND IS CURRENT OF APRIL 2026.

BASIN BRIEF

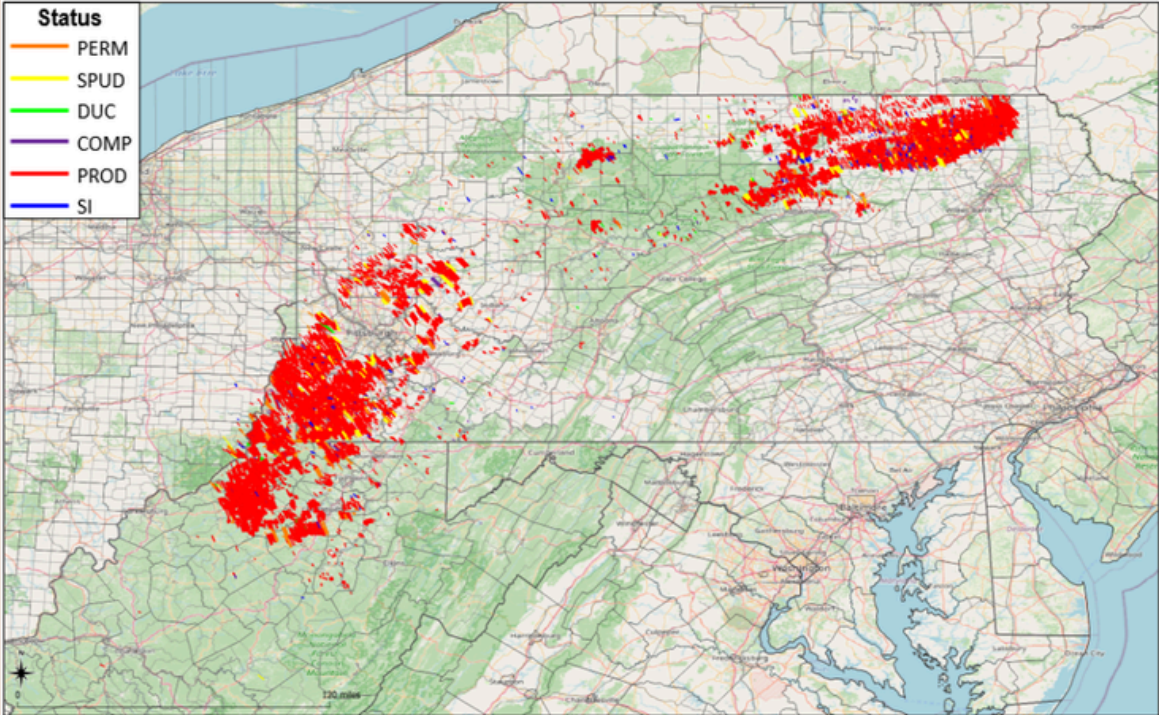
PERMIT DETAILS

NO.	API	COUNTY	OPERATOR	PERMIT DATE	RESERVOIR
1	34-111-25029-0000	Monroe	Expand Energy	2/3/2026	Utica
2	34-111-25030-0000	Monroe	Expand Energy	2/3/2026	Utica
3	34-111-25031-0000	Monroe	Expand Energy	2/3/2026	Utica
4	34-111-25032-0000	Monroe	Expand Energy	2/3/2026	Utica
5	34-111-25033-0000	Monroe	Expand Energy	2/3/2026	Utica
6	34-013-21669-0000	Belmont	Ascent	2/6/2026	Utica
7	34-013-21670-0000	Belmont	Ascent	2/6/2026	Utica
8	34-059-24748-0000	Guernsey	Infinity	2/6/2026	Utica
9	34-059-24749-0000	Guernsey	Infinity	2/6/2026	Utica
10	34-059-24750-0000	Guernsey	Infinity	2/6/2026	Utica
11	34-059-24751-0000	Guernsey	Infinity	2/9/2026	Utica
12	34-059-24752-0000	Guernsey	Infinity	2/9/2026	Utica
13	34-059-24753-0000	Guernsey	Infinity	2/10/2026	Utica
14	34-059-24754-0000	Guernsey	Infinity	2/10/2026	Utica
15	34-067-21890-0000	Harrison	Ascent	2/11/2026	Utica
16	34-067-21891-0000	Harrison	Ascent	2/11/2026	Utica
17	34-067-21892-0000	Harrison	Ascent	2/11/2026	Utica
18	34-121-24708-0000	Noble	Ascent	2/17/2026	Utica
19	34-121-24709-0000	Noble	Ascent	2/17/2026	Utica
20	34-121-24710-0000	Noble	Ascent	2/17/2026	Utica
21	34-121-24711-0000	Noble	Ascent	2/17/2026	Utica
22	34-111-25034-0000	Monroe	Gulfport	2/20/2026	Utica
23	34-111-25035-0000	Monroe	Gulfport	2/20/2026	Utica
24	34-111-25036-0000	Monroe	Gulfport	2/20/2026	Utica
25	34-111-25037-0000	Monroe	Gulfport	2/20/2026	Utica
26	37-059-28622	Greene	EQT	2/2/2026	Marcellus
27	37-059-28623	Greene	EQT	2/2/2026	Marcellus
28	37-059-28624	Greene	EQT	2/2/2026	Marcellus
29	37-059-28625	Greene	EQT	2/2/2026	Marcellus
30	37-059-28626	Greene	EQT	2/2/2026	Marcellus
31	37-059-28627	Greene	EQT	2/2/2026	Marcellus
32	37-015-24012	Bradford	Blackhill Energy	2/5/2026	Marcellus
33	37-015-24013	Bradford	Blackhill Energy	2/5/2026	Marcellus
34	37-015-24014	Bradford	Blackhill Energy	2/5/2026	Marcellus
35	37-015-24015	Bradford	Blackhill Energy	2/5/2026	Marcellus
36	37-117-22325	Tioga	JKLM Energy	2/9/2026	Marcellus
37	37-117-22326	Tioga	JKLM Energy	2/9/2026	Utica
38	37-117-22327	Tioga	JKLM Energy	2/9/2026	Utica

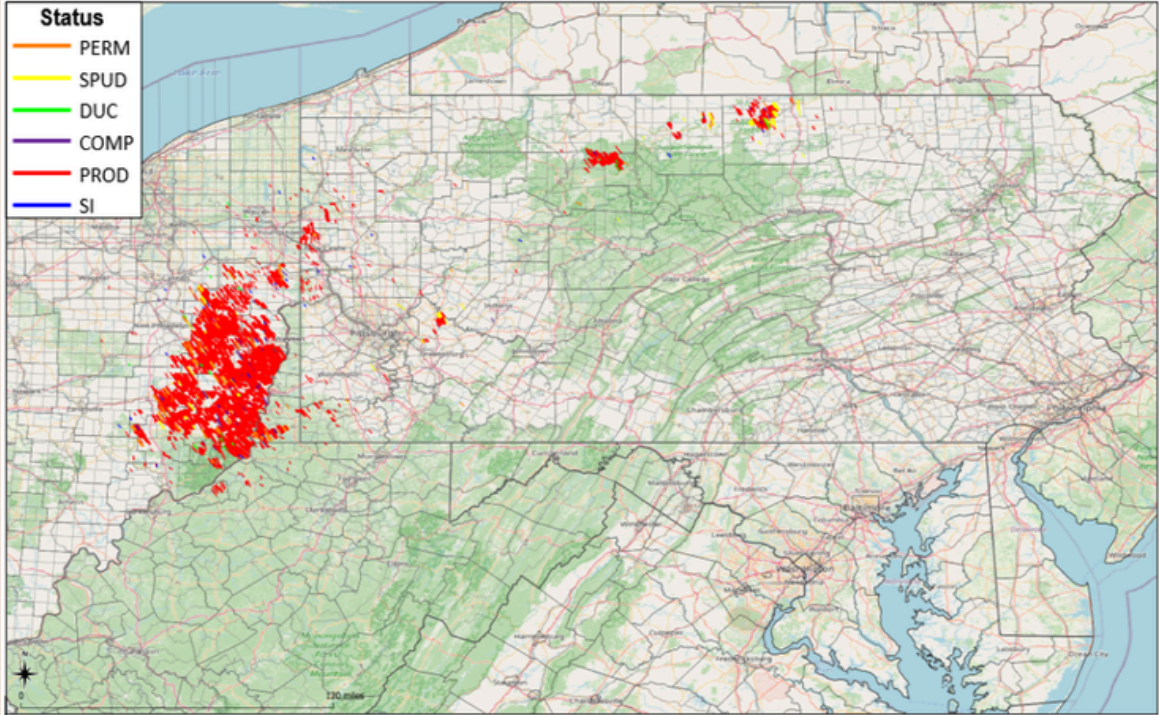
39	37-063-37582	Indiana	INR Operating	2/10/2026	Marcellus
40	37-063-37583	Indiana	INR Operating	2/10/2026	Marcellus
41	37-117-22328	Tioga	JKLM Energy	2/12/2026	Marcellus
42	37-117-22329	Tioga	JKLM Energy	2/12/2026	Marcellus
43	37-117-22330	Tioga	JKLM Energy	2/12/2026	Marcellus
44	37-019-23015	Butler	Pennenergy	2/13/2026	Marcellus
45	37-019-23016	Butler	Pennenergy	2/13/2026	Burket
46	37-019-23017	Butler	Pennenergy	2/13/2026	Burket
47	37-019-23018	Butler	Pennenergy	2/13/2026	Burket
48	37-019-23019	Butler	Pennenergy	2/13/2026	Marcellus
49	37-019-23020	Butler	Pennenergy	2/13/2026	Burket
50	37-019-23021	Butler	Pennenergy	2/13/2026	Burket
51	37-019-23022	Butler	Pennenergy	2/13/2026	Marcellus
52	37-019-23023	Butler	Pennenergy	2/13/2026	Burket
53	37-019-23024	Butler	Pennenergy	2/13/2026	Burket
54	37-019-23025	Butler	Pennenergy	2/13/2026	Marcellus
55	37-063-37584	Indiana	Infinity	2/17/2026	Utica
56	37-129-29296	Westmoreland	CNX	2/24/2026	Utica
57	37-059-28633	Greene	EQT	2/26/2026	Marcellus
58	37-059-28634	Greene	EQT	2/26/2026	Marcellus
59	37-059-28635	Greene	EQT	2/26/2026	Marcellus
60	37-059-28636	Greene	EQT	2/26/2026	Marcellus
61	37-059-28637	Greene	EQT	2/26/2026	Marcellus
62	37-059-28638	Greene	EQT	2/26/2026	Marcellus
63	37-059-28639	Greene	EQT	2/26/2026	Marcellus
64	47-091-01393	Taylor	Arsenal	2/5/2026	Marcellus
65	47-091-01394	Taylor	Arsenal	2/5/2026	Marcellus
66	47-085-10578	Ritchie	Antero	2/9/2026	Marcellus
67	47-085-10579	Ritchie	Antero	2/9/2026	Marcellus
68	47-085-10574	Ritchie	Antero	2/9/2026	Marcellus
69	47-085-10575	Ritchie	Antero	2/9/2026	Marcellus
70	47-085-10576	Ritchie	Antero	2/10/2026	Marcellus
71	47-085-10577	Ritchie	Antero	2/10/2026	Marcellus
72	47-017-07003	Doddridge	Antero	2/12/2026	Marcellus
73	47-033-05900	Harrison	Arsenal	2/12/2026	Marcellus
74	47-033-05901	Harrison	Arsenal	2/12/2026	Marcellus
75	47-033-05904	Harrison	Arsenal	2/12/2026	Marcellus
76	47-033-06127	Harrison	Arsenal	2/12/2026	Marcellus
77	47-033-06128	Harrison	Arsenal	2/12/2026	Marcellus
78	47-041-05786	Lewis	Antero	2/12/2026	Marcellus
79	47-033-06129	Harrison	Arsenal	2/20/2026	Marcellus

BASIN BRIEF

MARCELLUS WELLS BY STATUS



UTICA WELLS BY STATUS



BASIN BRIEF

PERMITTING SUMMARY BY STATE

STATE	JAN	FEB	MAR	APR	MAY	JUN	JUL	AUG	SEP	OCT	NOV	DEC	FEB 2025
OH	11	25	-	-	-	-	-	-	-	-	-	-	27
PA	29	38	-	-	-	-	-	-	-	-	-	-	40
WV	8	16	-	-	-	-	-	-	-	-	-	-	15
TOTAL	48	79	-	-	-	-	-	-	-	-	-	-	82

PERMITTING SUMMARY BY OPERATOR

OPERATOR	JAN	FEB	MAR	APR	MAY	JUN	JUL	AUG	SEP	OCT	NOV	DEC	TOTAL
Antero	8	8	-	-	-	-	-	-	-	-	-	-	16
EQT	1	13	-	-	-	-	-	-	-	-	-	-	14
Ascent	4	9	-	-	-	-	-	-	-	-	-	-	13
Coterra	12	-	-	-	-	-	-	-	-	-	-	-	12
Expand Energy	7	5	-	-	-	-	-	-	-	-	-	-	12
Pennenergy	-	11	-	-	-	-	-	-	-	-	-	-	11
Infinity Natural Re	-	10	-	-	-	-	-	-	-	-	-	-	10
Gulfport	5	4	-	-	-	-	-	-	-	-	-	-	9
Arsenal	-	8	-	-	-	-	-	-	-	-	-	-	8
Repsol	6	-	-	-	-	-	-	-	-	-	-	-	6
Others (6)	5	11	-	-	-	-	-	-	-	-	-	-	16
TOTAL	48	79	-	-	-	-	-	-	-	-	-	-	127

HORIZONTAL WELLS BY RESERVOIR BY STATUS

RESERVOIR	PERM	SPUD	DUC	COMP	PROD	SI	TOTAL
Marcellus	505	512	85	110	15,531	329	17,072
Utica	227	122	40	31	4,240	68	4,728
Burket	9	31	-	2	333	6	381
TOTAL	741	665	125	143	20,104	403	22,181

BASIN BRIEF

PRODUCING WELL COUNT BY RESERVOIR

RESERVOIR	OH	PA	WV	TOTAL
Marcellus	50	11,481	4,000	15,531
Utica	3,677	437	126	4,240
Burket	-	301	32	333
TOTAL	3,727	12,219	4,158	20,104

PRODUCING MARCELLUS WELLS

OPERATOR	OH	PA	WV	TOTAL
EQT	8	2,224	992	3,224
Expand Energy	30	2,437	696	3,163
Range Resources	-	1,607	-	1,607
Antero	-	-	1,427	1,427
Coterra	-	1,097	-	1,097
Seneca	-	834	-	834
Repsol	-	782	-	782
CNX	1	486	93	580
Pennenergy	-	360	-	360
XTO Energy	-	268	54	322
Others (50)	11	1,386	738	2,135
TOTAL	50	11,481	4,000	15,531

PRODUCING UTICA WELLS

OPERATOR	OH	PA	WV	TOTAL
EOG Resources	1,226	-	-	1,226
Ascent	977	-	-	977
Gulfport	484	-	-	484
Infinity	367	-	-	367
EQT	186	20	88	294
Expand Energy	219	2	5	226
Seneca	-	193	-	193
Hilcorp	95	97	-	192
CNX	45	33	5	83
Pin Oak Energy	17	33	-	50
Others (16)	61	59	28	148
TOTAL	3,677	437	126	4,240

WVU ELM PROGRAM UPDATE



By: Shawn Grushecky, Program Coordinator and Assistant Professor of Energy Land Management

WVU Students Attend 2026 NAPE Summit in Houston

Students from West Virginia University's Energy Land Management program recently traveled to Houston to attend the North American Prospect Expo, one of the largest gatherings of land and energy professionals in the country. Seven students participated in this year's trip, made possible through the generous support of industry partners.

For many students, NAPE was their first opportunity to experience the energy industry at scale. Walking the expo floor, engaging with companies, and attending networking events provided a perspective that goes far beyond the classroom. Students connected with land professionals, company representatives, and WVU alumni, gaining insight into daily work in the field and the skills needed to succeed.

Throughout the week, students were invited to several key events, including the Steptoe and Johnson Women's Energy Luncheon and the Steptoe and Johnson VIP Reception. These experiences allowed students to engage in meaningful conversations and expand their professional networks in a welcoming environment.

A highlight of the trip was WVU's presence on the expo floor, supported by Northeast Natural Energy, where students had the opportunity to work the booth and represent the program. This gave them valuable experience communicating with industry professionals and sharing their perspectives as emerging landmen.

Students consistently noted that the most impactful part of the experience was the ability to build connections and see firsthand the opportunities available in the industry. Interacting with professionals who once stood in their position helped make career pathways feel more tangible and attainable.

This experience was made possible through the support of Northeast Natural Energy, Arsenal Resources, DPS Land Services, Steptoe and Johnson PLLC, and additional partners who continue to invest in student development. Their commitment provides WVU students with opportunities to engage, learn, and grow as they prepare to enter the profession.



WVU ELM Students Emma Lee, Macie Banton, Anna Voris, and Lucy Wullenweber enjoying lunch at the Steptoe and Johnson, PLLC Women's Energy Luncheon.



The WVU group enjoying the Sammy Kershaw concert during the opening ceremony of the 2026 NAPE Summit



WVU students and faculty on the NAPE Summit Expo floor.



CENTER FOR
**EARTH, ENERGY
& ENVIRONMENT**
at Marietta College

Inaugural Symposium

Energy & Resource Management: A Path Forward for Appalachia

Including:

- * **Panel:** The Future of Energy Demand vs. Deliverability
- * **Plenary:** U.S. Department of Energy
- * **Roundtable:** Advancing Business in Appalachia Through Sustainable Resource Management
- * **AI / Data Science** in the Energy Industry
- * **Value of STEM** Education

More info & Register: **Marietta.edu/CEEE**

SAVE THE DATE

April 20-21, 2026

Marietta College Campus



KEYNOTE:
Dr. Scott Tinker
host of PBS's
Energy Switch



Energy & Resource Management: A Path Forward for Appalachia

View the program and register at www.marietta.edu/CEEE

REGISTER NOW!

Monday, April 20, 6:30 p.m.

Special screening of "SWITCH ON" followed by Q&A
with filmmaker Dr. Scott Tinker

Sponsored by the historic PEOPLES BANK THEATRE

In the documentary you will meet leaders, entrepreneurs, and everyday citizens working to eradicate 'energy poverty' in their countries. In a journey that's enlightening and emotional, "Switch On" will change the way you look at energy and the developing world forever.



2026 MLBC **5K** & FAMILY FUN RUN

ALL PROCEEDS BENEFIT THE MLBC FOUNDATION'S SCHOLARSHIP PROGRAM!

MAY 1, 2026
6:00PM CHECK-IN | 7:00PM START



JOIN US FOR THE AFTER PARTY AT TABLE 9!

EARLY BIRD PRICE: \$20-35

PRICES INCREASE AFTER FEBRUARY 28TH!

2 COURSES: 5K OR 1 MILE



**MORGANTOWN RAIL TRAIL
40 DONLEY STREET
MORGANTOWN, WV 26501**

IS YOUR COMPANY INTERESTED IN
SPONSORING THIS CHARITABLE EVENT?
CONTACT JOHN CONRAD TO LEARN HOW
YOU CAN GET INVOLVED!

(304) 288-6912
JCONRAD@INFINITYNR.COM

PRESENTED BY:



MLBC Foundation
Powering Our Communities



MLBC AWARD NOMINATIONS

The MLBC Awards Committee is calling for volunteers and nominations for our 2025-2026 Awards Program. The MLBC established its awards program in order to recognize members for achieving excellence in the land profession here in the Appalachian Basin.

MLBC AWARDS PROGRAM

If you are interested in volunteering for the Awards Committee or you wish to nominate a deserving member, please submit all nominations to Abby Veigel at abbyveigel@mlbc-aapl.org or Dave Stockman at david.stockman@westernls.com. Nominations should include the name of the individual making the nomination, the name of the nominee and a brief description in support of the nominee. Descriptions or letter of support for the nominee should be limited to one page.

THE MLBC AWARDS CONSIST OF THE FOLLOWING:

Best Member Communication: The award for Best Member Communication was established to recognize the best single communication by an MLBC member during the 2025 calendar year. The communication may be written or oral, but if oral, a written transcript must be submitted. The communication may be to the MLBC, to AAPL, or to the industry but must pertain to the land profession. The individual must be a member of MLBC for his or her entry to be considered.

Friend of MLBC Award: The Friend of MLBC Award was established to recognize a company or individual that has made significant contributions to the betterment of the MLBC in any way deemed worthy of recognition.

J. W. Findley Lifetime Achievement Award: The J. W. Findley Lifetime Achievement Award was named after the organizer of the inaugural MLBC meeting held on July 17, 1959, and the organization's first President. The award is the highest and most distinguished honor of our association. The award was established to recognize an MLBC member who has demonstrated excellence and integrity in contributing to our association and our profession. Current MLBC officers are excluded from nomination.

Landman of the Year Award: To be presented to a MLBC member who honored and distinguished the land profession through demonstrated leadership, integrity, and his/her contribution to the industry, the community, and the profession during calendar year 2025. Current MLBC Officers are excluded from nomination.

If you are interested in volunteering for the Awards Committee or you wish to nominate a deserving member, please submit all nominations to Abby Veigel at abbyveigel@mlbc-aapl.org or Dave Stockman at david.stockman@westernls.com. If you have any questions, feel free to reach out. Thank you.



STAY CONNECTED!

Follow us on our social media channels for news & updates!



[@mlbc-aapl](https://www.linkedin.com/company/mlbc-aapl)



Michael Late Benedum
Chapter of AAPL



[@mlbc-aapl](https://twitter.com/mlbc-aapl)



[@mlbc_aapl](https://www.instagram.com/mlbc_aapl)



www.mlbc-aapl.org

MAKE EVERY LAND DEAL MORE BULLISH.



ACQUISITION · LEASING · TITLE · DUE DILIGENCE · ROW · MAPPING



A truly powerful beast in the field. Detail-oriented. Cost-effective. Innovative. Firmly grounded on providing the strongest land services for multinational and domestic energy firms with more than \$20 billion in acquisition due diligence projects under foot. Get your next project charged at stockyardsland.com.

MLBC

SPRING

2026

UPCOMING EVENTS

APR
2-3 → APPALACHIAN LAND INSTITUTE
CANONSBURG, PA

MAY
1 → MLBC FOUNDATION CHARITY 5K RUN
MORGANTOWN, WV

MAY
7 → TROPICS SPRING SOCIAL
MORGANTOWN, WV

MAY
29 → MLBC FOUNDATION SPRING CHARITY GOLF
MIDWAY, PA

JUN
11 → ANNUAL AWARDS DINNER
PETE DYE GOLF CLUB, BRIDGEPORT, WV

JUL
9 → PNC PARK SOCIAL- PIRATES VS BRAVES
PITTSBURGH, PA

AUG
17 → MLBC FOUNDATION FALL CHARITY GOLF
BRIDGEPORT, WV





2025-2026 EXECUTIVE COMMITTEE

PRESIDENT



Kevin Pierson
Blue Duck Resources
kp@blueduckres.com

VICE PRESIDENT



Stacy Tichy, CPL
Percheron, LLC
stacy.tichy@percheronllc.com

SECRETARY



Ben McKinney
Step toe and Johnson
ben.mckinney@steptoe-johnson.com

TREASURER



Daniel Cooper
OGM Partners LLC
daniel@ogmpllc.com

SGT. AT ARMS



Chuck Saffer
Babst Calland
CSaffer@babstcalland.com

LOCAL DIRECTOR



Jim Kane
Cassidy Anderson & Kane, P.C.
jkane@cassidykc.com

LOCAL DIRECTOR



Matt White
Step toe and Johnson
matt.white@steptoe-johnson.com

LOCAL DIRECTOR



Bill O'Brien
Step toe and Johnson
Bill.O'Brien@steptoe-johnson.com

REGIONAL DIRECTOR



Rob Greiner
OGM Partners LLC
rob@ogmpllc.com

PRESIDENT EMERITUS



John Catsonis
Apex Land Corp.
jcatsonis@apexlandcorp.com

COMMITTEE CHAIRS

TECHNOLOGY

JEREMY PRESTON
[JPRESTON@EQT.COM](mailto:jpreston@eqt.com)

SPONSORSHIP

SHAWN GRUSHECKY
[SHAWN.GRUSHECKY@MAIL.WVU.EDU](mailto:shawn.grushecky@mail.wvu.edu)

HISTORIAN

DAVID AMAN
[DAVID.W.AMAN@DOMINIONENERGY.COM](mailto:david.w.aman@dominionenergy.com)

**SCHOLARSHIP
UNIVERSITY LIASON**

TYLER COMPSTON
[COMPSTON.TYLER@GMAIL.COM](mailto:compston.tyler@gmail.com)

CO-EDUCATION

CHUCK SAFFER
[CSAFFER@BABSTCALLAND.COM](mailto:csaffer@babstcalland.com)

CO-EDUCATION

BILL O' BRIEN
[BILL.O'BRIEN@STEPTOE-JOHNSON.COM](mailto:bill.o'brien@steptoe-johnson.com)

LEGISLATIVE


NIKOLAS TYSIAK
[NTYSIAK@BABSTCALLAND.COM](mailto:ntysiak@babstcalland.com)

AWARDS

DAVID STOCKMAN
[DAVID.STOCKMAN@WESTERNLS.COM](mailto:david.stockman@westernls.com)

MARKETING

STACY TICHY
[STACY.TICHY@PERCHERONLLC.COM](mailto:stacy.tichy@percheronllc.com)

WOMEN OF THE MLBC

BROOKE KAMICKER
[BROOKE.KAMICKER@STEPTOE-JOHNSON.COM](mailto:brooke.kamicker@steptoe-johnson.com)

CLAY SHOOT

TYLER MURRAY
[TYLERMURRAY.LAND@GMAIL.COM](mailto:tylermurray.land@gmail.com)

MEMBERSHIP

OWEN GRAY
[OWEN.GRAY@STEPTOE-JOHNSON.COM](mailto:owen.gray@steptoe-johnson.com)

NEWSLETTER

DANIEL COOPER
[DANIEL@OGMPLLC.COM](mailto:daniel@ogmpllc.com)

ETHICS

THOMAS LONG
[THOMASLONG03@GMAIL.COM](mailto:thomaslong03@gmail.com)

FINANCE

JOHN CATSONIS
[JCATSONIS@APEXLANDCORP.COM](mailto:jcatsonis@apexlandcorp.com)

SPRING GOLF

JIM KANE
[JKANE@CASSIDYPC.COM](mailto:jkane@cassidyperc.com)

FALL GOLF

MATT WHITE
[MATT.WHITE@STEPTOE-JOHNSON.COM](mailto:matt.white@steptoe-johnson.com)

MLBC MEMBERSHIP REPORT

APRIL 2026



MEMBERSHIP BY THE NUMBERS

Total Members:	581	Total Active:	366
Active:	334	% Active:	62.99%
Active PP:	32	
Honorary:	10	Associate:	89
		Student:	116

First Name	Last Name	Employer	Member Type	Sponsoring Member
Ben	Millard	Diversified Energy Company, PLC	Associate	Kevin Pierson
Alexander	McCabe	Halo Land Management	Associate	Kevin Pierson
Lacy	Roberson	Chief Energy LLC	Active	Aaron Yost
Tiffany	Spiker	Steptoe & Johnson PLLC	Associate	Owen Gray
Anna	Voris	Infinity Natural Resources	Student	Kevin Pierson
Luke	Gillette	Texhoma Land Consultants	Student	Owen Gray
Benjamin	Elchik	Brighton Land Management	Active	Michael J. Moran
Emma	Dotson	Percheron	Active	Lori Crouch
Joseph	Sanders	Acres Blue LLC	Active	Jason Betts
Justin	Bossert	Balancing Rock Research, LLC	Active	Jessica Greenwald

New members are approved on a monthly basis. If the need arises to move along membership approval (ex. Ohio Landman Registration), please email Abby Veigel - abbyveigel@mlbc-aapl.org

MEMBERSHIP INFORMATION



The MLBC membership application is located on the website at www.mlbc-aapl.org. Please check your information on the website prior to submitting your renewal. The [MLBC website](http://www.mlbc-aapl.org) has an updated version of the membership listing. Please use this resource if you cannot find yours or others information in the directory. Please report any errors or omissions to Abby Veigel at abbyveigel@mlbc-aapl.org.

Application for membership in the Association shall be subject to the approval by a majority vote of the Executive Committee at a regularly scheduled meeting and shall require the signed approval by the acting President of the Executive Committee, as evidence of the Committee's approval.

Notice of the approved application(s) of all potential Association member(s) shall be printed in the next regularly scheduled publication of the Association. Members shall have the opportunity for a period of thirty (30) days following the publication to object to the potential member's application.

